



Aspect™ Systems Installation Guide

Aspect Systems Installation Guide
© **INFOTECH Soft, Inc.**
1201 Brickell Avenue • Suite 220
Miami • Florida • 33131
Phone 305.371.5111 • Fax 305.371.5112
Email solutions@infotechsoft.com
Web <http://www.infotechsoft.com>

Last Updated May 4, 2010

The information of this document may change without notice.

In case of any problem with this document, please send an email to solutions@infotechsoft.com.

Aspect™, Aspect Rating Station, Aspect Control Center, Aspect Data Source, and ClinicalSync™ are trademarks of INFOTECH Soft, Inc.

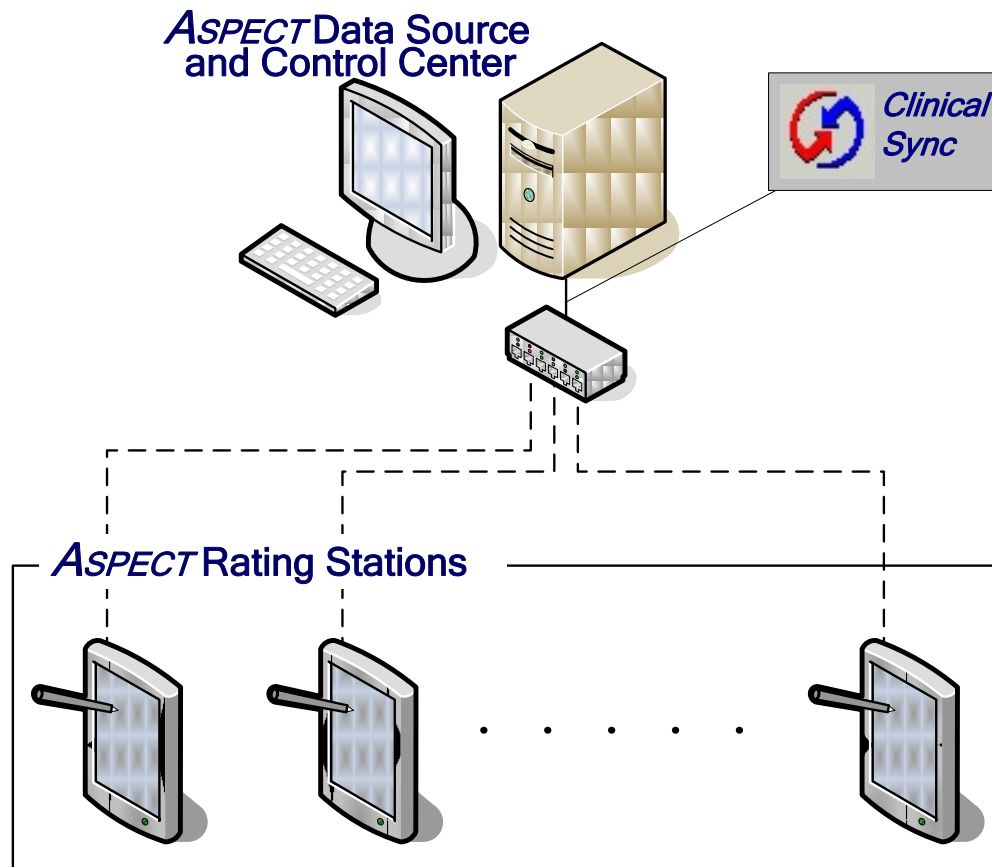
Table of Contents

Part I. Overview of Aspect Systems	4
Overview of Aspect Systems	5
Aspect Data Source	6
ClinicalSync Synchronization Engine	6
Aspect Control Center	7
Aspect Rating Station.....	8
Aspect Versions.....	9
Training/Demo Version	9
Standalone Version.....	9
Site Version.....	9
Multisite Version.....	9
Part II. Installing Aspect Systems	10
Setup Prerequisites	11
Aspect Control Center, Site Version	12
Aspect Site Configuration Wizard.....	15
Aspect Rating Station, Site Version	22
Aspect Rating Station Configuration Wizard	23
Part III. Installation Prerequisites.....	25
MySQL Database Server, Version 4.1	26
MySQL Server Instance Configuration.....	28
Part IV. Configuring Windows Settings.....	31
Configuring Security Settings	32
How To: Change the Screensaver Timeout	32
Configuring Network Settings	33
How To: Configure Network Settings	33
How To: Change the Computer Name	34
How To: Find the Computer Name, IP Address, and MAC Address	35
Starting Windows Services	36
ClinicalSync Service.....	36
Configuring Tablet PC Settings	37
How To: Configure the Tablet PC Jog-Dial for Scrolling	37
How To: Use the Tablet PC Input Panel	38
Part V. Creating Devices through the Aspect Control Center	40
Aspect Control Center	41
Security Manager Plug-In.....	41
Aspect Systems Settings Worksheets	43

Part I. Overview of Aspect Systems

Overview of Aspect Systems

INFOTECH Soft Aspect™ is an innovative mental health information system designed for mobility and intelligence. At its core, Aspect Forms provide a powerful mechanism for the representation of questionnaires and interviews. Used within the Aspect Rating Station, they combine the simplicity and ease of use of traditional paper-based forms with the power and flexibility of computer-based assessment. The collected information is efficiently stored and managed within the Aspect Data Source. The Aspect Control Center provides the system administrator with a set of tools to ensure the security and functionality of the system.



Aspect Data Source

The Aspect Data Source surrounds a database engine designed specifically to scale from single-user environments up to large, multi-user distributed environments containing vast amounts of data. Its robust and versatile structure permits the storage and synchronization of widely varying information without expensive and time-consuming database changes. The Aspect Data Source has been designed to work with any ANSI SQL-92 compliant database management system (DBMS), and has been tested and is certified to work with Microsoft Access 2000, Microsoft SQL Server 2000, and MySQL Database Server 4.1.

ClinicalSync Synchronization Engine

Multiple users can interact simultaneously with patient information and follow their course of assessment through Aspect Rating Stations connected through diverse means to the Aspect Data Source. The collaborative system architecture of Aspect provides for the seamless exchange and sharing of information in team-based research and treatment settings. The powerful ClinicalSync engine connects Aspect Rating Stations with the Aspect Data Source, ensuring that accurate and up-to-date forms and patient data are available on each Aspect Rating Station and that any changes to forms or patient data are precisely tracked.



In order for Aspect Rating Stations to connect to the Aspect Data Source, the Aspect Data Source must be connected to the network. For more information about configuring Windows settings, see *Part IV. Configuring Windows Settings*.

Aspect Control Center

The Aspect Control Center is the main administrative interface into the Aspect System. As such, the Control Center supports plug-in components for form design, security settings and user management, synchronization configuration, conflict resolution, and system auditing.

- **User Management:** The user management task takes care of creating user accounts in the Aspect System, configuring the users' permissions, and managing each user's profile, including signing certificate and system settings.
- **Synchronization Configuration:** The synchronization configuration task manages the process of defining ClinicalSync settings.
- **System Auditing:** The system-auditing task provides the means of easily analyzing the audit information of the Aspect System. Additionally, the system-auditing task includes an interface to customize the amount of auditing information to collect within the Aspect System.
- **Form Design:** If installed, the Aspect Form Developer provides for the creation and management of portable electronic form definitions to be used throughout the Aspect System.

Aspect Control Center Minimum System Requirements

Operating System:	Windows 2000/XP Professional
Processor:	Pentium II 500MHz
Memory:	256 MB
Free Hard Drive Space:	50 MB
Network:	10 Mbps Ethernet or 802.11x Wireless



The Aspect Data Source is normally installed along with the Aspect Control Center. The functionality included with the Aspect Control Center will vary based on the version of Aspect that you have installed.

Aspect Rating Station

The Aspect Rating Station provides a unique and highly intuitive electronic form assessment environment, designed to easily administer psychometric questionnaires, interviews, and rating scales. Through its easy-to-use interface, you can organize patients, and complete, review, correct, and sign Aspect Forms.



Aspect Rating Station Minimum System Requirements

Operating System: Windows 2000/XP Professional
Processor: Pentium III 1GHz
Memory: 256 MB
Free Hard Drive Space: 50 MB
Network: Modem or 10 Mbps Ethernet or 802.11x Wireless

Aspect Rating Station Recommended System

In order to utilize the powerful handwriting capture and recognition features built-in to Aspect, the Tablet PC hardware platform must be utilized.

Hardware Platform: Tablet PC
Operating System: Windows XP Professional Tablet PC Edition
Processor: Pentium 4 2GHz
Memory: 512 MB
Free Hard Drive Space: 50 MB
Network: Modem or 10 Mbps Ethernet or 802.11x Wireless



In order for Aspect Rating Stations to connect to the Aspect Data Source, the Aspect Rating Station must be able to connect to the network. For more information about configuring Windows settings, see *Part IV. Configuring Windows Settings*.

Aspect Versions

There are several versions of the Aspect System customized to address specific issues in mental health and clinical research.

Training/Demo Version

The training version of the Aspect System provides a restricted functionality version of the Aspect Control Center and Aspect Rating Station. Data entered into the training version cannot be exported, synchronized or shared with other systems.

Standalone Version

The standalone version of the Aspect System supports a single computer running the Aspect Data Source, Control Center, and Rating Station. It is intended for small studies and a limited number of users. Data entered into the standalone version can be exported and shared with other systems.

Site Version

The site version of the Aspect System support multiple users and multiple Aspect Rating Stations in a distributed computing environment. The Aspect Data Source and ClinicalSync synchronization engine are used to coordinate the data among all of the Aspect Rating Stations

Multisite Version

The multi-site version of the Aspect System aggregates data collected at multiple, autonomous Aspect sites into a single Aspect Data Source. Included is the Aspect Control Center for managing the communication connections between the participating Aspect sites.

Part II. Installing Aspect Systems

Setup Prerequisites

Depending on the version and component of the Aspect System that you are installing, there may be one or more software packages that must be installed prior to installing the Aspect component. Examples include the MySQL Database Engine or Microsoft SQL Server Database.

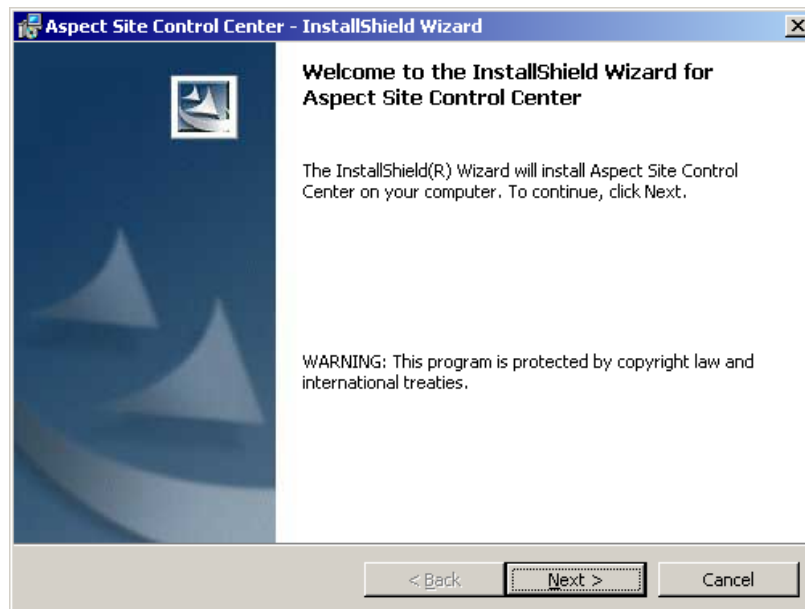
In most cases, the prerequisite software will be included on your installation CD and installed automatically, if not already installed on your computer. However, certain versions of the Aspect System may not bundle prerequisite software with the installation CD, or you may want to install alternate software, in which case the Aspect Installer will indicate that you must install the prerequisite software prior to installing the Aspect component.



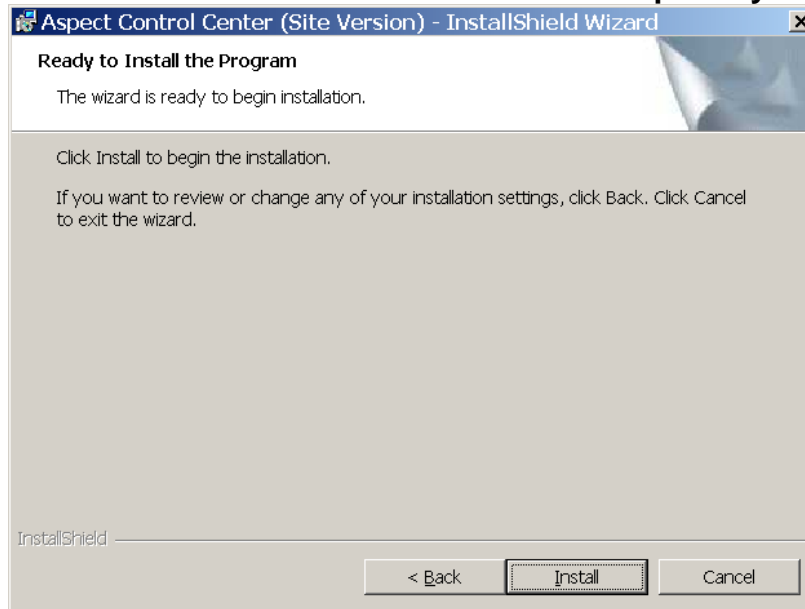
The Aspect Control Center requires that MySQL 4.1 or later be installed prior to installing the Aspect Control Center. See *Part III Installation Prerequisites* for more information about installing these components.

Aspect Control Center, Site Version

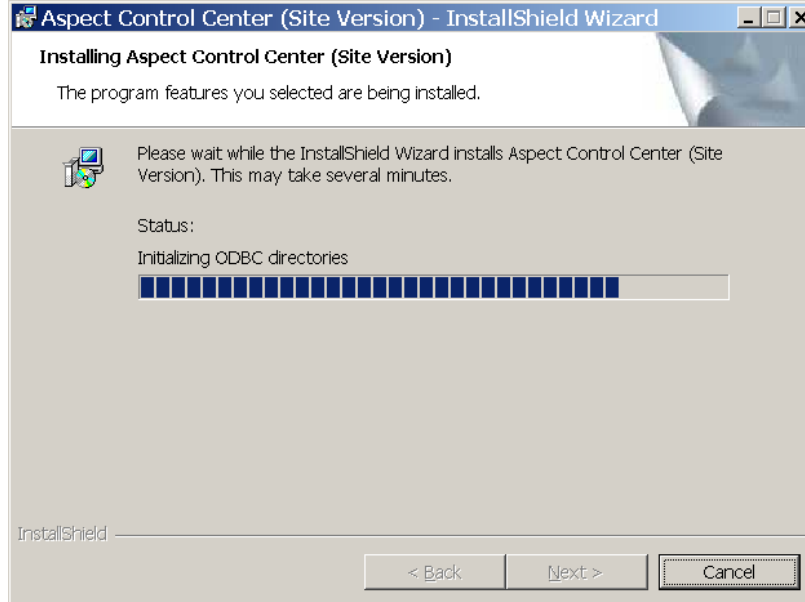
The Aspect Control Center installer is preconfigured to install the Aspect software to the *Program Files* folder in Windows. You may elect to change the installation location or installation type. The Aspect installer will not let you remove critical components of the Aspect System.

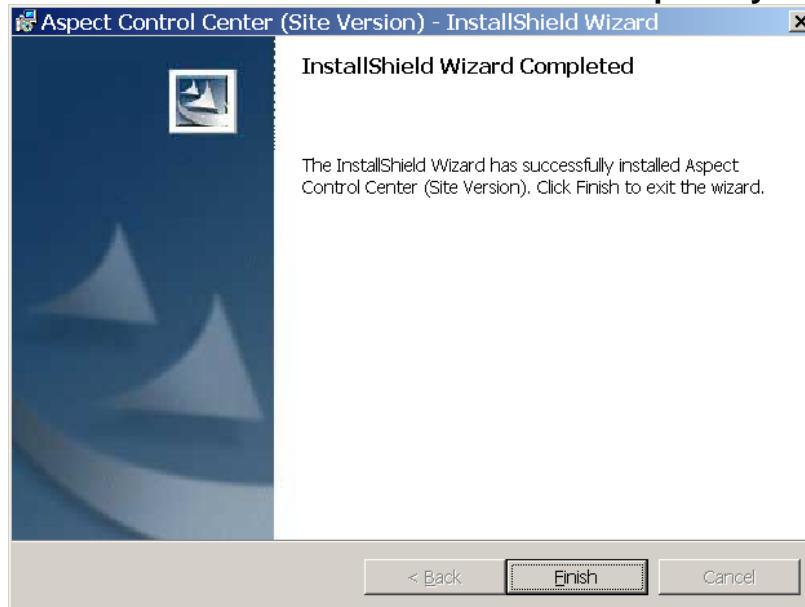


In order to complete the Aspect Control Center installation, you must be logged in to Windows using an administrator account.



In some versions of the Aspect Systems you may be able to selectively install and remove portions of the Aspect System. For the site version, all components in the Aspect Control Center installer are required.



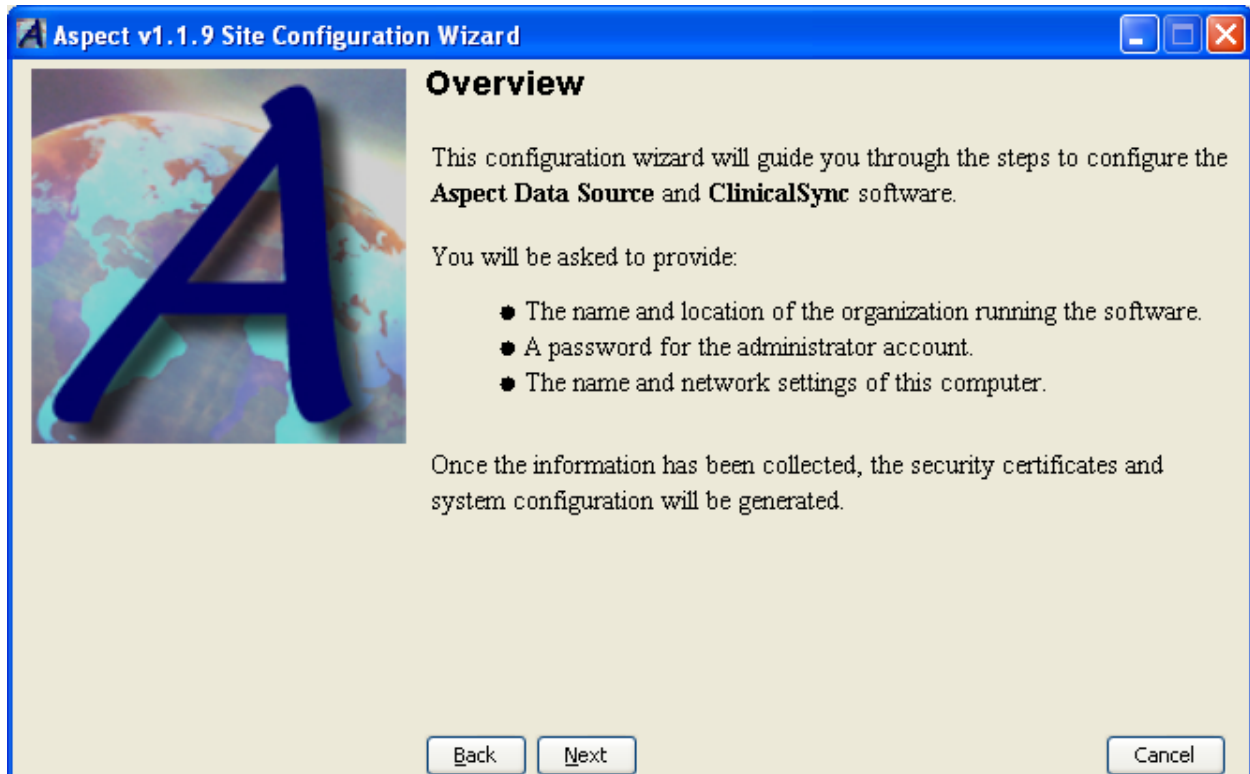


Once the installation has completed, double-click on the Aspect Control Center icon on your desktop to start the Aspect Site Configuration Wizard.



Aspect Site Configuration Wizard

The first time you start the Aspect Control Center, you will be asked to provide information required to configure the Aspect Systems. This includes the username and password to be used with the MySQL database, information about your site and the computer the Aspect software is being installed on, and the initial administrator password.



Database Configuration

The Aspect Control Center is installed with support for Apache Derby 10.1 and MySQL Server 4.1 or later. If you are going to use Aspect in a multiuser/multicomputer environment, you must configure Aspect to use MySQL Server 4.1 or later. See *Part III Installation Prerequisites* for more information about installing MySQL Server.

Aspect v1.1.9 Site Configuration Wizard

Steps

1. Enter Database Settings.
2. Enter Organization Information.
3. Create Administrator Account.
4. Enter Computer Information.
5. Confirm Settings.
6. Perform Installation.

Database Information

Configuration settings for the installed database.

Database: Apache Derby (10.1 or later)

Username:

Password:

In order to complete this step, make sure that database is installed. Apache Derby is installed by default. For MySQL, the given user account must be granted administrative privileges.

Buttons: Back, Next, Cancel

Aspect v1.1.9 Site Configuration Wizard

Steps

1. Enter Database Settings.
2. Enter Organization Information.
3. Create Administrator Account.
4. Enter Computer Information.
5. Confirm Settings.
6. Perform Installation.

Database Information

Configuration settings for the installed database.

Database: MySQL Server (4.1 or later)

Database Requires Login

Username: root

Password: *****

In order to complete this step, make sure that database is installed. Apache Derby is installed by default. For MySQL, the given user account must be granted administrative privileges.

Buttons: Back, Next, Cancel



You must enter a valid MySQL user account and the MySQL Server must be installed and running before the *next* button will become enabled.

Organization Information

In order to create a security certificate for the site and uniquely identify data within Aspect, you are asked to provide information about your site or organization. The generated site security certificate will be used as the root certificate authority for all devices and users within the site.

Aspect Site Configuration Wizard

Steps

1. Enter Database Settings.
- 2. Enter Organization Information.**
3. Create Administrator Account.
4. Enter Computer Information.
5. Confirm Settings.
6. Perform Installation.

Organization Information

Please enter your organization's information.

Organization Name: Aspect Training Site

Division: Training

City: San Diego

State: California

Country: United States

Site Identifier: TRAIN

Certificate Validity: 10 years

Organization information is used to generate a unique security certificate. The site identifier should be a short alphanumeric name to uniquely identify the site.

Back Next Cancel



Be careful not to include symbols or punctuation in the organization information fields. Non alpha-numeric characters may cause the certificate generation process to fail, requiring you to reconfigure the Aspect System.



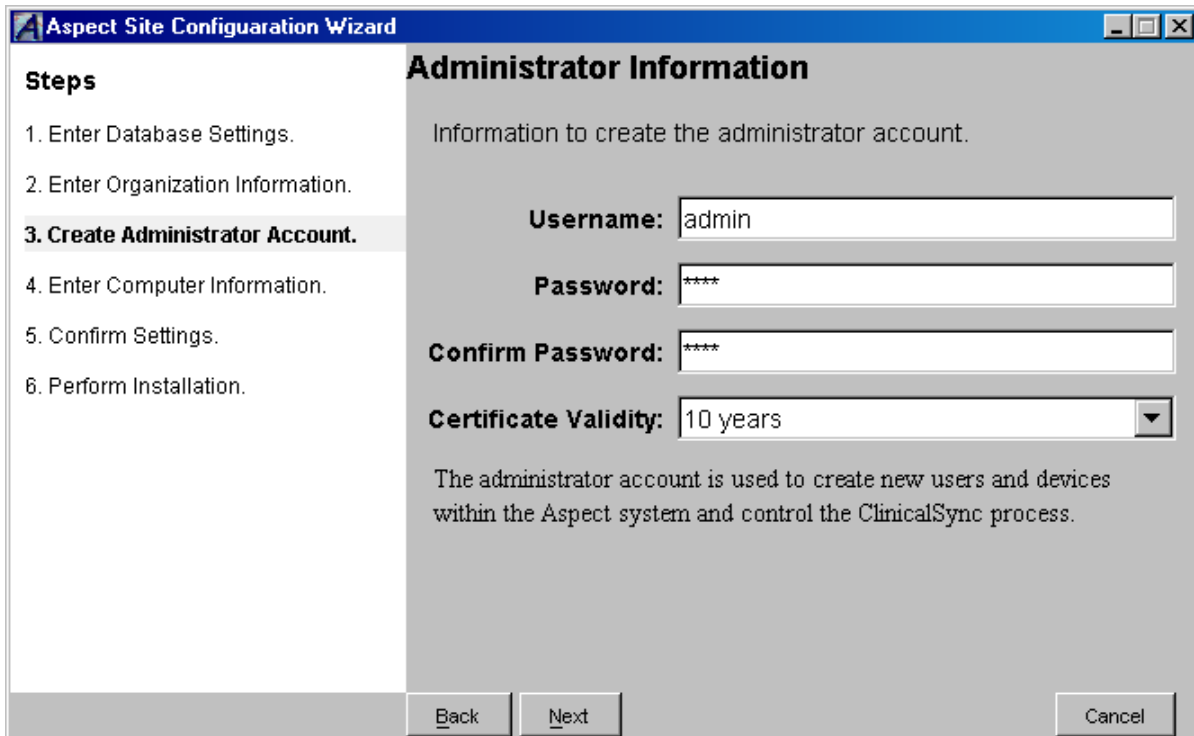
The *certificate validity* time indicates how long the Aspect System can run without having to regenerate additional security certificates.



For organizations sharing data with other sites, it is recommended that you select a unique *site identifier*, which will ensure that the collected data can be shared between sites.

Aspect Administrator Account

An initial administrator account will be created during the installation process. This account can then be used to log in to the Aspect Control Center and add new users and devices to the Aspect System.



The screenshot shows a window titled "Aspect Site Configuration Wizard" with a "Steps" pane on the left and a main "Administrator Information" pane on the right. The "Steps" pane lists six steps, with "3. Create Administrator Account." highlighted. The "Administrator Information" pane contains the following fields:

- Username:** admin
- Password:** ****
- Confirm Password:** ****
- Certificate Validity:** 10 years (dropdown menu)

Below the fields, a note states: "The administrator account is used to create new users and devices within the Aspect system and control the ClinicalSync process." At the bottom of the window are "Back", "Next", and "Cancel" buttons.



The *certificate validity* time indicates how long the administrator account can be used without having to regenerate additional security certificates.

Computer Information

In order to allow Aspect Rating Stations to synchronize automatically and securely with the Aspect Data Source through the ClinicalSync, you must provide information about the computer that Aspect is being installed on. The *computer name*, *location*, and *certificate validity* fields are used to generate a security certificate for the computer that is subsequently used for secure communication with the Rating Stations.

Aspect Site Configuration Wizard

Steps

1. Enter Database Settings.
2. Enter Organization Information.
3. Create Administrator Account.
- 4. Enter Computer Information.**
5. Confirm Settings.
6. Perform Installation.

Computer Information

Please enter information about your computer.

Computer Name:

Location:

MAC Address:

IP Address:

Certificate Validity:

Information about this computer.
 Location (optional): describes where this computer is located.
 MAC Address: uniquely identifies the network card used during the ClinicalSync process.



Be careful when two or more network cards are installed on the computer. Only the MAC Address and IP Address of the provided setting will be used during the ClinicalSync process.



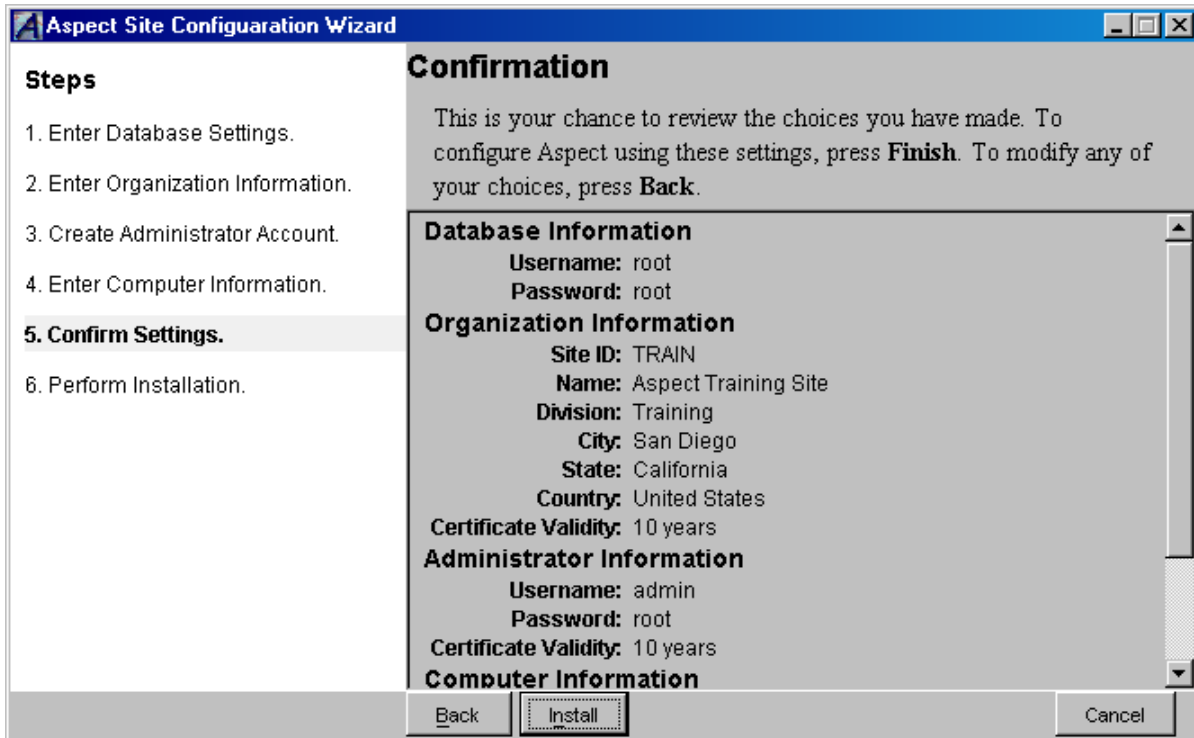
The MAC Address and IP Address are determined automatically by the computer's current network settings. For more information about network settings see *Part IV. Configuring Windows Settings*.



The *certificate validity* time indicates how long the administrator account can be used without having to regenerate additional security certificates.

Verify Installation Information

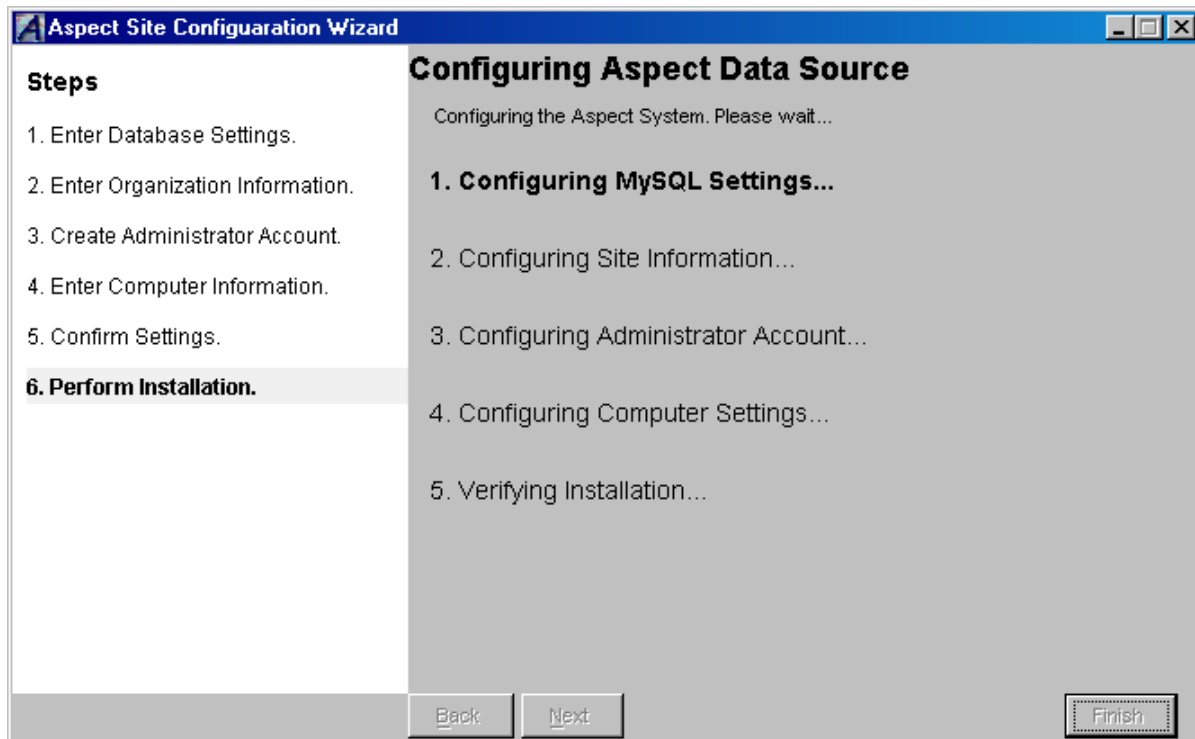
Once all of the configuration settings have been collected, you will be asked to verify the installation information. If any of the settings are incorrect, go back to the appropriate step and correct the setting.



Be careful to take note of the administrator account username and password. If you forget the password you will not be able to access the Aspect Control Center.

Performing Installation

The Aspect configuration process creates the appropriate database tables in MySQL and creates the site, administrator, and computer security certificates that are used to ensure data security and integrity.



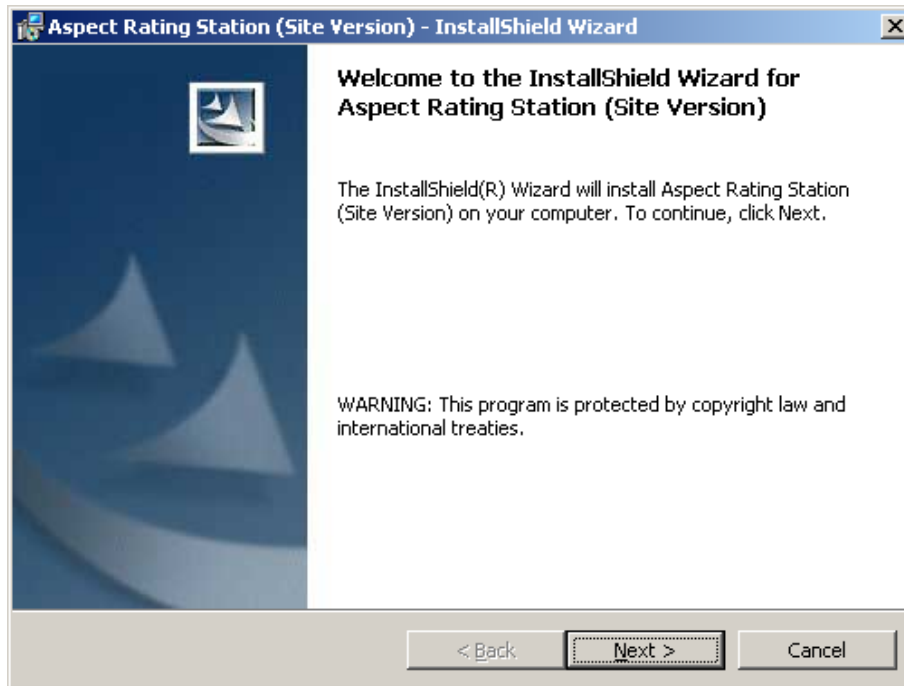
The Aspect configuration process may take several minutes, depending on the processor speed and memory installed on your computer. During this time, the security certificates are being generated.



If the configuration process fails, the step will be highlighted in red and a description of the problem will be displayed. You can click on the *back* button to modify any configuration settings without restarting the configuration wizard.

Aspect Rating Station, Site Version

The site version of the Aspect Rating Station is designed to work along with the Aspect Control Center in a distributed, multi-user environment. The Aspect Rating Station installer is preconfigured to install the Aspect software to the *Program Files* folders in Windows.



Do not install the Aspect Rating Station software on the same computer as the Aspect Control Center.



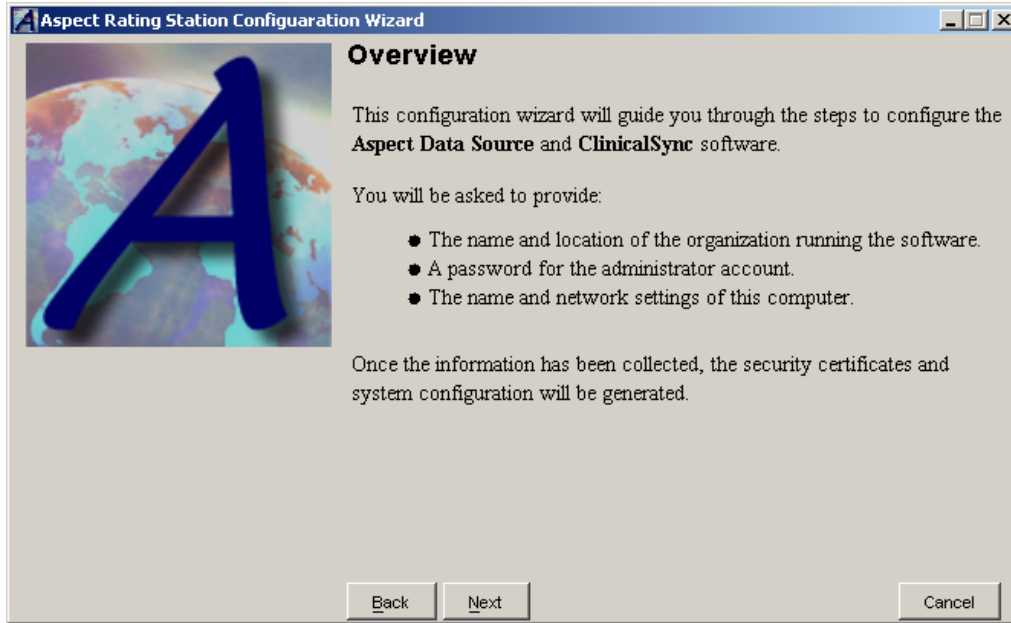
The Aspect Control Center should be installed and configured, and the ClinicalSync Server engine should be started before installing the Aspect Rating Station on any device.



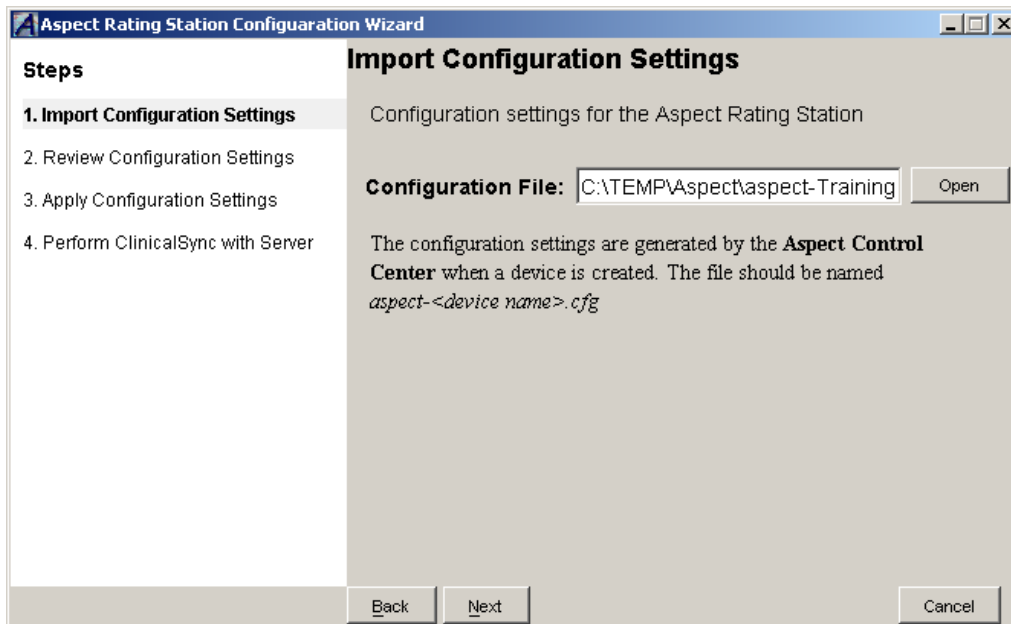
In order to complete the Aspect Rating Station installation, you must be logged in to Windows using an administrator account.

Aspect Rating Station Configuration Wizard

The first time you start the Aspect Rating Station, you will be asked to provide the configuration settings for the device.

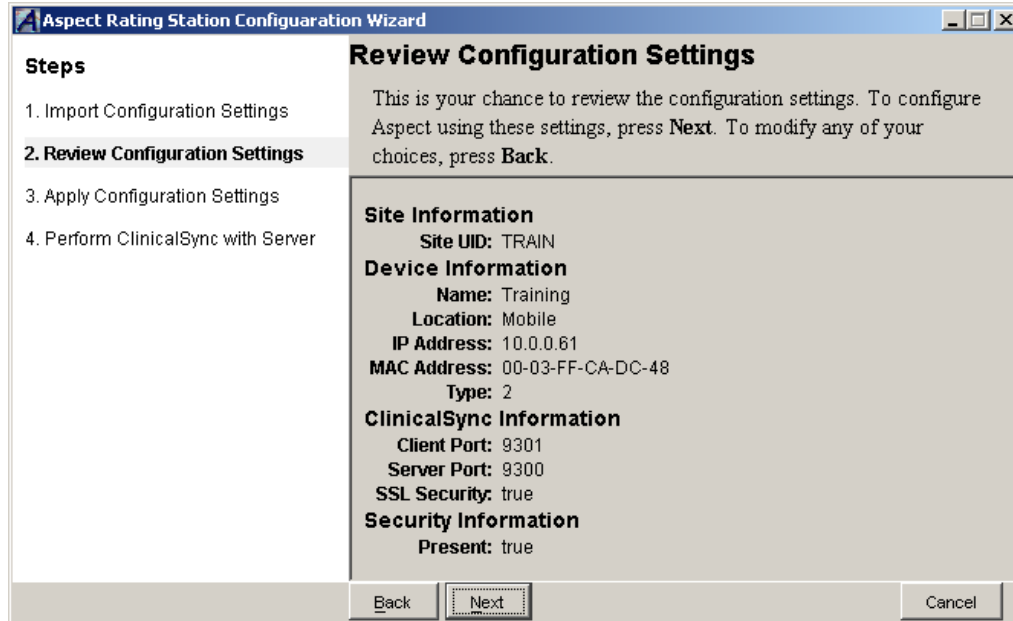


In order to complete the Aspect Rating Station configuration, you will need to create a device through the Aspect Control Center and copy the device configuration file to the Rating Station computer. For more information about creating devices, see the *Part V. Creating Devices through the Aspect Control Center* or the *Aspect Control Center User's Guide*.



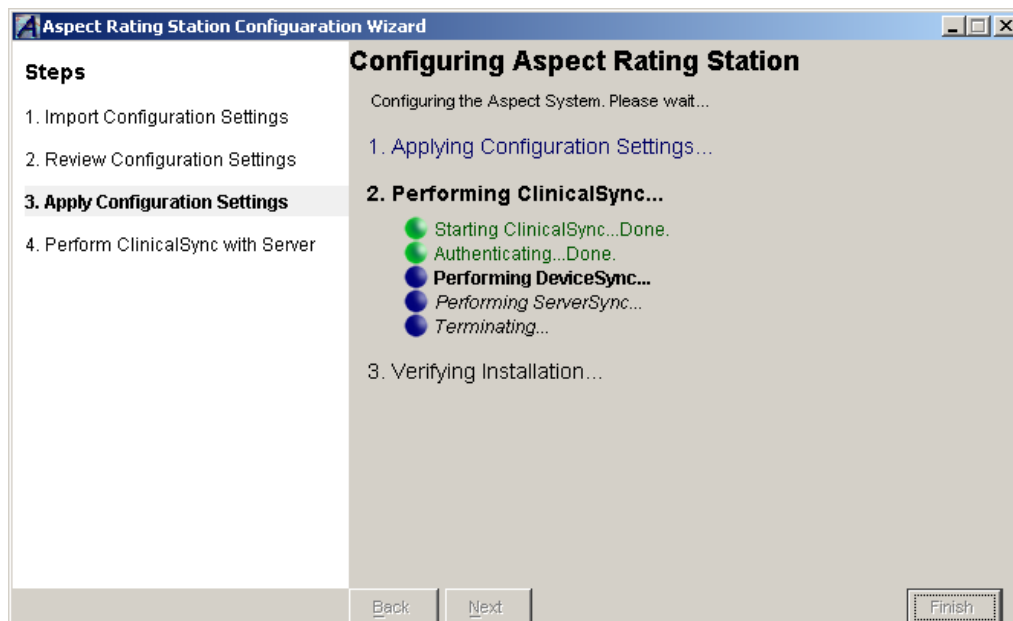
Review Configuration Settings

You will have a chance to review the configuration settings for the device to ensure that the information is accurate. If there is a mistake in the configuration, make the correction through the Aspect Control Center and use the new configuration file.



Performing System Configuration and First ClinicalSync

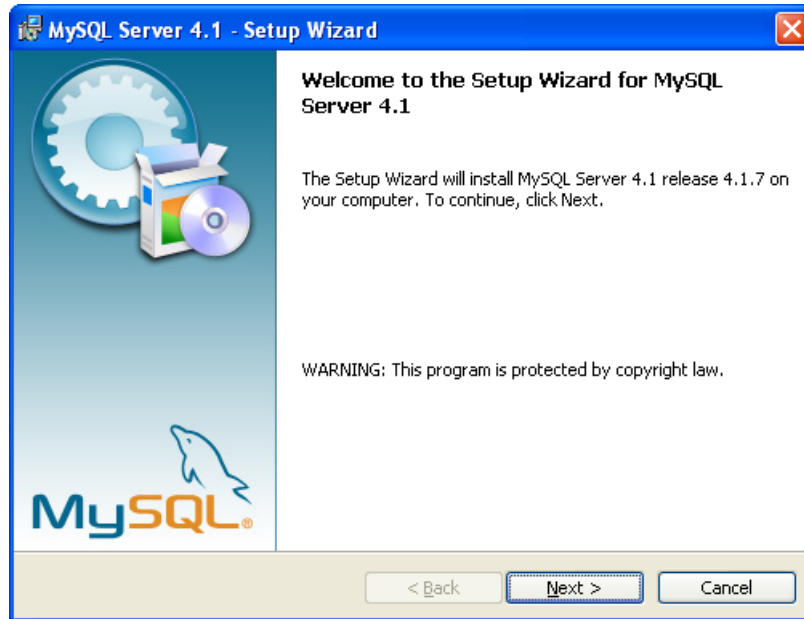
The final step of the Aspect Rating Station configuration is to perform a ClinicalSync with the Aspect Control Center. This ensures that the Rating Station has the most up-to-date security settings, form definitions, and clinical data.



Part III. Installation Prerequisites

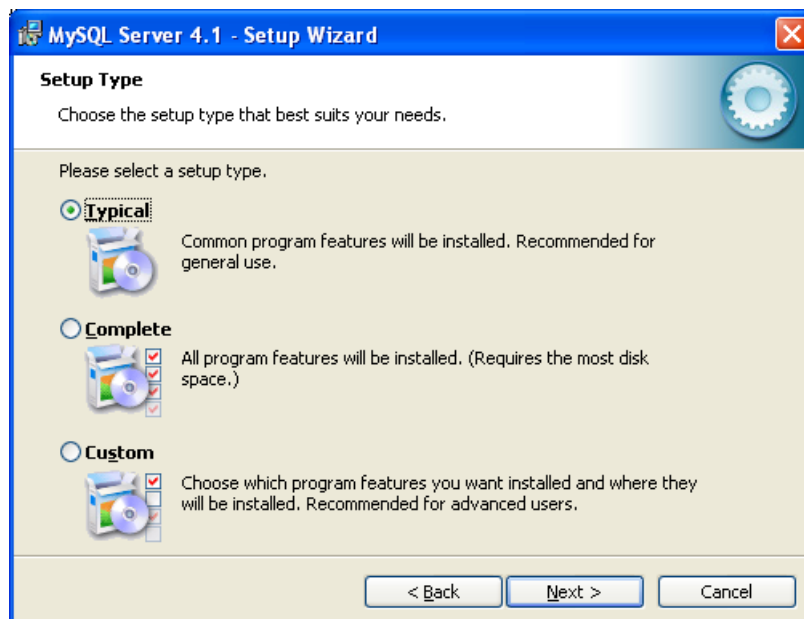
MySQL Database Server, Version 4.1

The Aspect Data Source is designed to work with any ANSI SQL-92 compliant database management system (DBMS). It has been tested and certified to work with MySQL Database Server 4.1 or later.

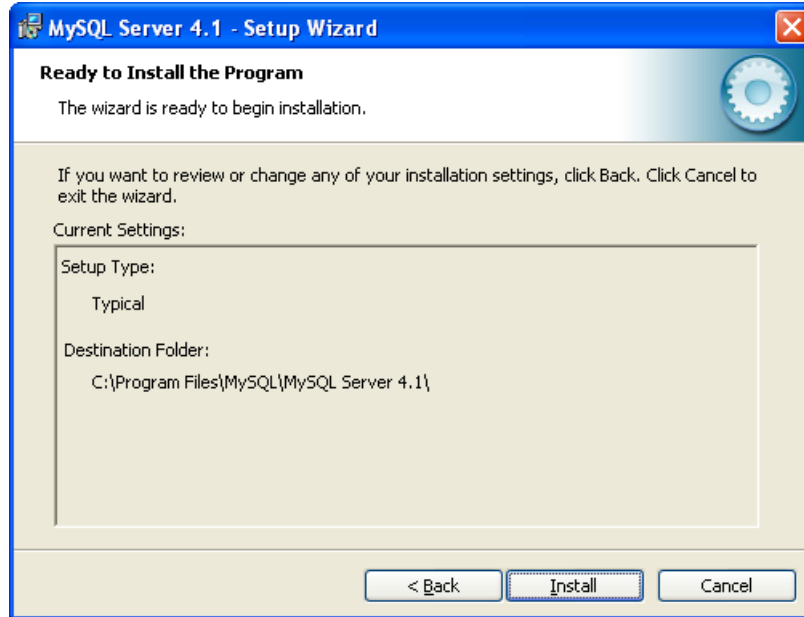


MySQL Installation Setup Type

For most users, the typical installation setup will work without modification. If you need to change the installation location or would like to include additional documentation with the installation, select *complete* or *custom* installation.



Once you have made your selection, you are presented with a summary of the installation settings. Click on *Back* to modify the installation settings or *Install* to begin the MySQL installation.

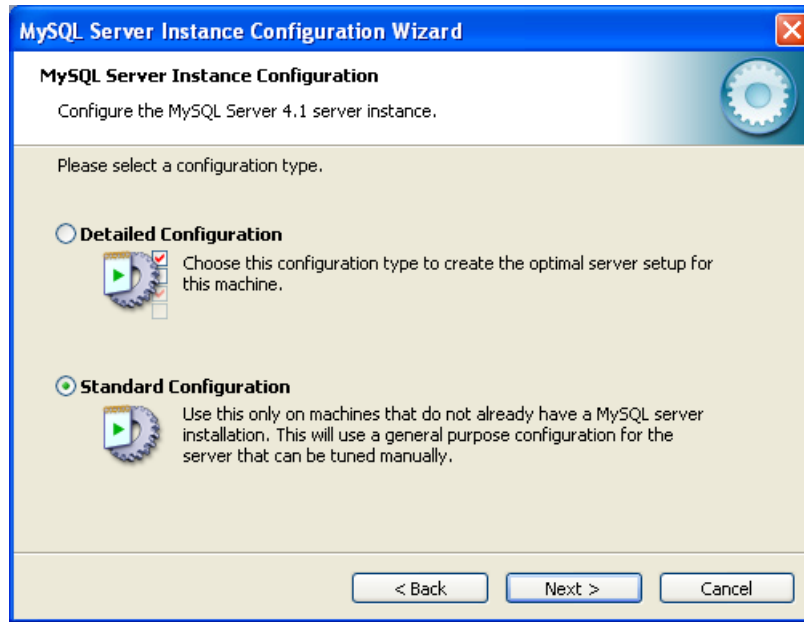


After the MySQL installation, you will be asked to sign up for a MySQL.com account. This will provide you with an account on the MySQL.com website to access user documentation, discussion groups, and other MySQL content. Signing up for a MySQL.com account is optional, and you may skip this step.

MySQL Server Instance Configuration

In order for the Aspect Systems to utilize the MySQL database, it must be configured and running as a Windows service. At the end of the MySQL installation, you will be asked if you want to *Configure the MySQL Server now*. You can either do it now, or start the configuration wizard later through the *Start* menu.





It is recommended that you select *Standard Configuration*, as the detailed configuration requires additional steps be completed during the setup of a MySQL database.



The Aspect System needs to be able to connect to the MySQL database automatically without user interaction. If MySQL is not started as a Windows service, the ClinicalSync engine and Aspect Control Center may not function properly.



MySQL Security Settings

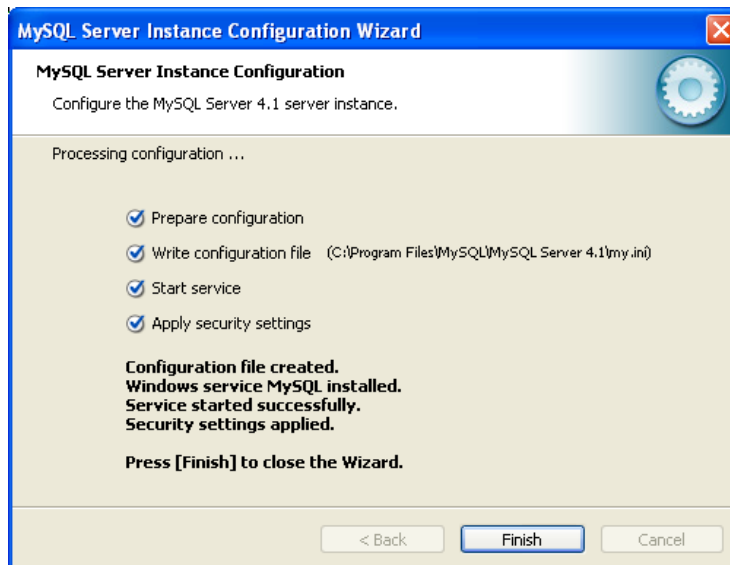
At this point, you are presented with the option to modify the default security settings and *Anonymous* account.



The default administrator account is *root* with no password. It is *highly recommended* that you set a secure password for this account.



The Aspect Systems configuration wizard will ask for the username and password of a user with permission to create, read, modify, and delete MySQL tables. Aspect can use the *root* account, or you can add another account for Aspect to use.



If the MySQL database is not installed and configured properly, the Aspect Data Source, Aspect Control Center, and ClinicalSync engine will not work.

Part IV. Configuring Windows Settings

Configuring Security Settings

Changing security settings should only be done while logged in under the Administrator account.

How To: Change the Screensaver Timeout

- On the desktop, right-click on the desktop area.
- **Tablet PC:** Using the stylus, hold down the button on the stylus and press on the screen in the desktop area, then move the stylus away from the screen (This is the equivalent of right clicking on the screen with the mouse)
- Click on **Properties** in the drop-down list.
- Click **Screen Saver** from the tabs at the top of the properties dialog.
- In the Screen Saver section, change the **Wait** time to the desired amount of time required to pass with no activity before the screen saver is displayed.
- Click **OK** for the change to take effect.



INFOTECH Soft recommends that the screensaver timeout be set to fifteen minutes and that the screensaver is password protected.

Configuring Network Settings

Changing network settings should only be done while logged in under the Administrator account.

How To: Configure Network Settings

*Note the network settings can be determined in **How To: Find the Computer Name, IP Address, and MAC Address**.. This step is only required if you want to change the network settings.*

(From the Desktop)

- On the desktop, right-click on **My Network Places**, and then click **Properties** on the drop-down list.
- **Tablet PC:** Using the stylus, hold down the button on the stylus and press on the **My Network Places** icon then move the stylus away from the screen (This is the equivalent of right clicking on the screen with the mouse)
- Click on **Properties** in the pop-up list.

(From the Start Menu)

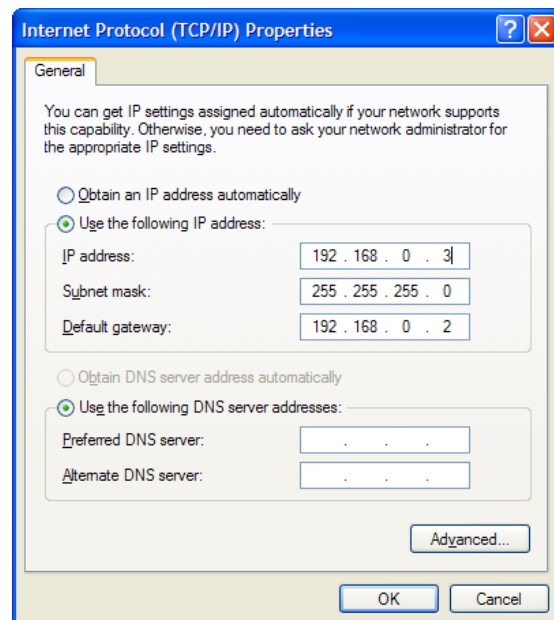
- On the **Start Menu**, select **Settings**, and click on **Network and Dial-up Connections**.

(From Control Panel)

- On the **Start Menu**, select **Settings**, and click on **Control Panel**.
- From the **Control Panel**, double-click on **Network Settings**.

Configuring Network Settings

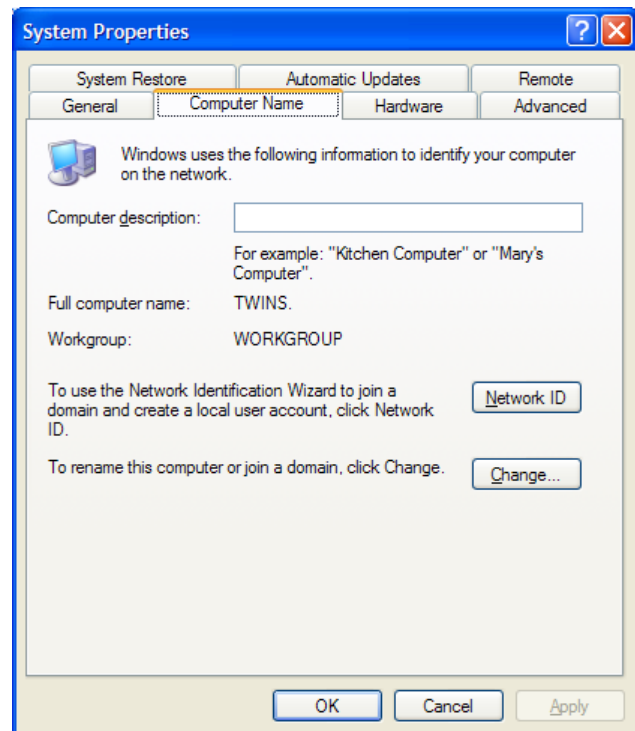
- From the **Network Connections** window, right-click on **Local Area Connection**.
- Click on **Properties** from the pop-up list.
- Double-click on **Internet Protocol (TCP/IP)**
- From the Internet Protocol Properties dialog, select **Use the following IP address**.
- Fill-in the **IP address**, **Subnet mask**, and **Default gateway** settings.
- Click on **OK**.
- Click on **OK**.



How To: Change the Computer Name

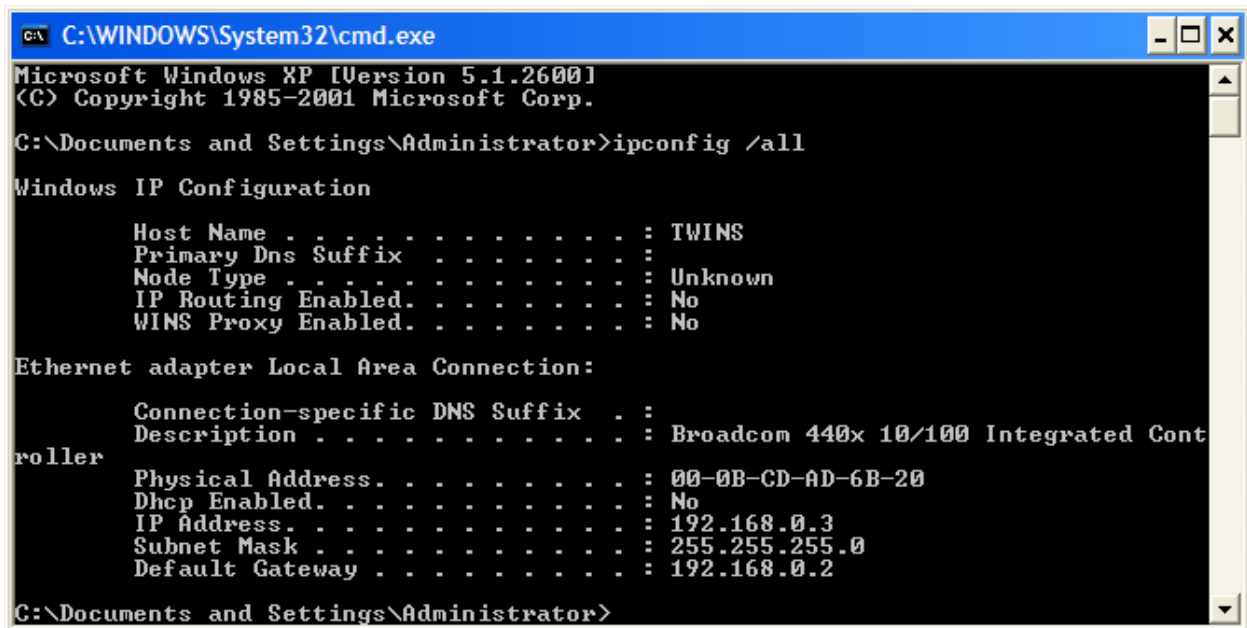
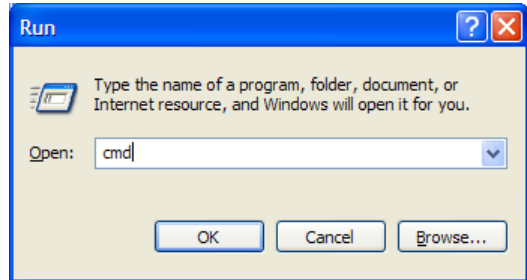
*Note the computer name can be determined in **How To: Find the Computer Name, IP Address, and MAC Address**. This step is only required if you want to change the computer name.*

- On the **Start Menu**, select **Settings**, and click on **Control Panel**.
- From the **Control Panel**, double-click on **System**.
- Click on the **Computer Name (or Network Identification)** tab.
- Make a note of the computer name, or change it if desired.



How To: Find the Computer Name, IP Address, and MAC Address

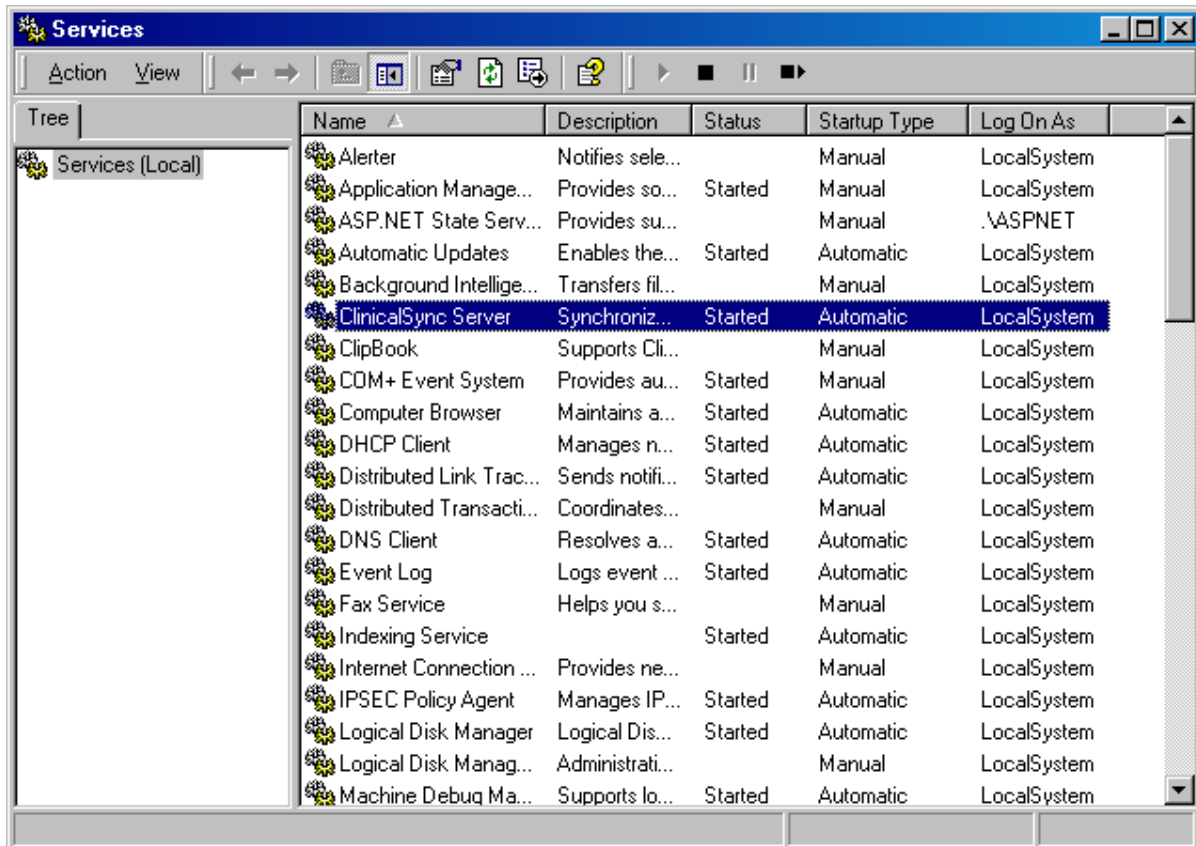
- On the **Start Menu**, click on **Run...**
- Type “cmd” (no quotes), click on **OK**. A DOS window will open.
- From the DOS window, type “ipconfig /all” (no quotes)
- Record the **Host Name** (computer name), **Physical Address** (MAC address), **IP Address**, **Subnet Mask**, and **Default Gateway** settings.



Starting Windows Services

ClinicalSync Service

During the installation process, the Aspect ClinicalSync Server is installed as a Windows service. In order for Rating Stations to connect to the Aspect Data Source, this service must be started *after* the configuration wizard has run.



The ClinicalSync Server service starts automatically when Windows starts. You can manually start the service the first time by opening the *Administrator Tools* in the *Control Panel* and starting the ClinicalSync Server service. Alternately, you can reboot the computer to have the service started automatically.

Configuring Tablet PC Settings

How To: Configure the Tablet PC Jog-Dial for Scrolling

The Jog Dial on the Tablet PC can be reconfigured to behave similarly to the wheel on a standard mouse. The Jog Dial is a round button on the right-side of the Tablet PC. Once it has been reconfigured:

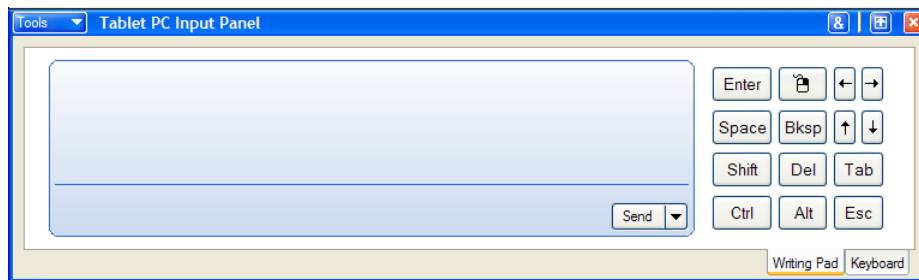
- Pressing down on the Jog Dial will cause scrolling windows to scroll down.
- Pressing up on the Jog Dial will cause scrolling windows to scroll up.

Log into the Tablet PC as Administrator.

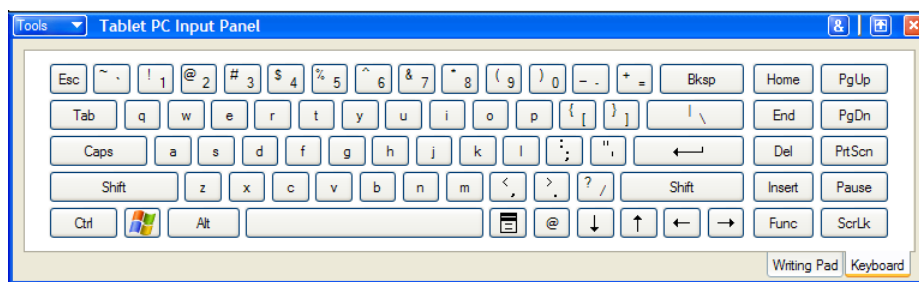
1. Click on the **Start Menu** button on the lower left of the screen to open the start menu.
2. Click on the **Control Panel** option located on the right side of the menu.
3. Double-click on the **Tablet and Pen Settings** icon.
4. Click on the tab that reads **Tablet Buttons**.
On the screen will be a menu with a column entitled “Tablet Button” and a column entitled “Action”.
5. In the “**Tablet Button**” column, click on the word **UP** to highlight it.
6. Next, click on the ‘**Change...**’ button at the bottom.
7. Next to the **Action**, the “Navigate Option” selection is currently chosen by default. Click on the down arrow to display the selection list for the action.
8. Then click on the option, “Mouse Wheel Up”.
9. Click on the **OK** button.
10. Back in the “**Tablet Button**” menu, select the word **DOWN**.
11. Click the **Change...** button.
12. Next to **Action**, click the down arrow to redisplay the selection list and select the option “Mouse Wheel Down”.
13. Click the **OK** button to return to the “Tablet Buttons” menu.
14. Click the **OK** button again to accept the changes and exit.

How To: Use the Tablet PC Input Panel

The input panel can be used to fill out the text areas of the form. The input panel has two settings, one with an on-screen keyboard and one with a freehand writing area. The on-screen keyboard can be used in coordination with the pen to click on individual letters and symbols like a keyboard. The writing pad can be used along with the pen to write text freely, which will be recognized by the system and placed in the text area location where the cursor is currently flashing. To send the text from the writing area to the text area, the user can press the 'Send' button, or pause briefly until the writing panel automatically retrieves, recognizes, and sends the text.



Input Panel: Writing Pad



Input Panel: Keyboard

To Re-dock the Input Panel

- Double click on the Input Panel title bar (where it says "Tablet PC Input Panel")
- The Input Panel will lock to the bottom of the screen

To Minimize or Maximize the Input Panel

- Click on the arrow between the ampersand and the red 'x' on the "Input Panel" title bar to toggle between the Input Panel being maximized and minimized

To Display or Remove the Input Panel

- The Input Panel can be removed by clicking on the red 'x' on the title bar, or by clicking on the script 'e' located just off of the tablet screen (at the top of the screen in portrait mode)
- The Input Panel can be re-displayed by clicking on the script 'e'

To Maximize the Aspect Form

- Double click on the Aspect Form title bar (where it has the subject and form name)
- Or, click on the 'square' icon (between the '-' icon and 'x' icon on the title bar)

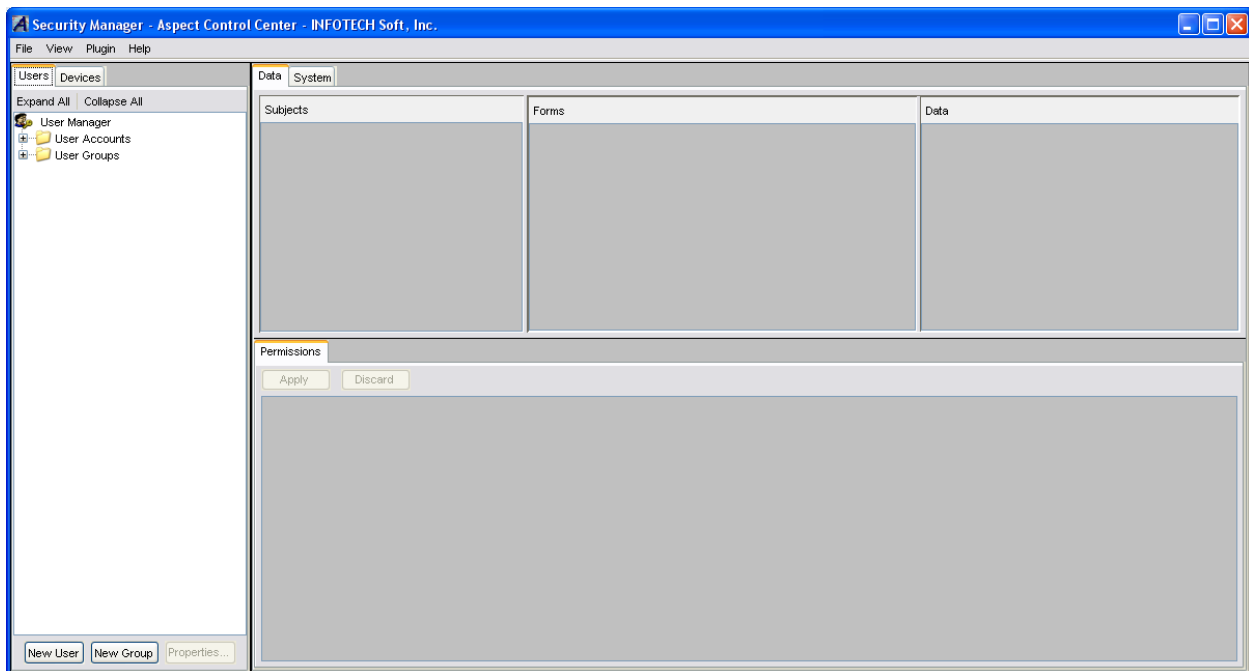
Part V. Creating Devices through the Aspect Control Center

Aspect Control Center

The Aspect Control Center is the main administrative interface into the Aspect System. As such, the Control Center supports plug-in components for security settings and user management, synchronization configuration, conflict resolution, and system auditing. The Control Center also takes care of user authentications. For more information about the Aspect Control Center, see the *Aspect Control Center User's Guide*.

Security Manager Plug-In

The Security Manager is a plug-in to the Control Center that enables an administrator to manage user accounts, manage Rating Station devices, review audit records, manage multi-site sync profiles, and review sync profiles.

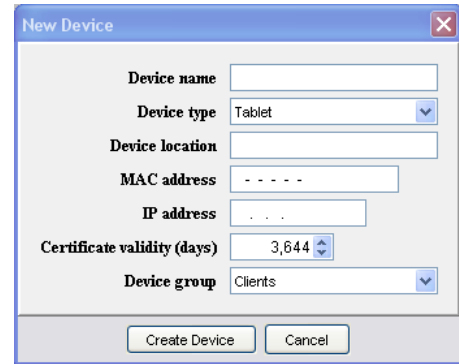


Device Manager

The Device Management component of the Security Manager plug-in provides the functionality to add and remove devices, modify device permissions, and manipulate device groups. By clicking on the *Devices* folder in the Security Management tree, a listing of the devices in the Aspect System appears on the right side of the plug-in. Only devices that you are allowed to see will be displayed.

New Device

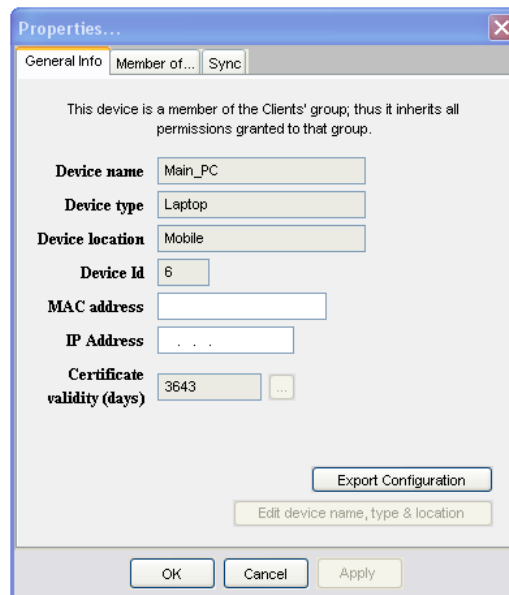
The New Device dialog provides you with an easy method to add new devices to the system. Although the MAC address is optional at creation time, the device created will not be able to connect to the Aspect System until its MAC address is set. See *Part IV. Configuring Windows Settings* for more information about finding a computer's MAC and IP addresses.



Because Aspect generates unique security certificates for each new device, it may take up to one minute to create a device.

Export Device Configuration

When the Rating Station software is installed on a computer it cannot be started without being configured as an appropriate device within the Aspect System. The device must be created in the Control Center and the configuration file must be manually copied to the device to enable it. Once you have created a device in the Control Center, right-click on the device and select *Export Configuration* to create a configuration file for the Rating Station. See *Part II. Installing Aspect Systems* for more information about configuring the Aspect Rating Station.



Aspect Systems Settings Worksheets

Aspect Control Center Settings

Computer Name: _____

MAC Address: : : : : : _____

IP Address: . . . _____

Subnet Mask: . . . _____

Default Gateway: . . . _____

Preferred DNS Server: . . . _____

Alternate DNS Server: . . . _____

Notes: _____

Aspect Rating Station Settings

Computer Name: _____

MAC Address: : : : : : _____

IP Address: . . . _____

Subnet Mask: . . . _____

Default Gateway: . . . _____

Preferred DNS Server: . . . _____

Alternate DNS Server: . . . _____

Notes: _____

Aspect Rating Station Settings

Computer Name: _____

MAC Address: : : : : : _____

IP Address: . . . _____

Subnet Mask: . . . _____

Default Gateway: . . . _____

Preferred DNS Server: . . . _____

Alternate DNS Server: . . . _____

Notes: _____

Aspect Rating Station Settings

Computer Name: _____

MAC Address: : : : : : _____

IP Address: . . . _____

Subnet Mask: . . . _____

Default Gateway: . . . _____

Preferred DNS Server: . . . _____

Alternate DNS Server: . . . _____

Notes: _____

Aspect Rating Station Settings

Computer Name: _____

MAC Address: : : : : : _____

IP Address: . . . _____

Subnet Mask: . . . _____

Default Gateway: . . . _____

Preferred DNS Server: . . . _____

Alternate DNS Server: . . . _____

Notes: _____

Aspect Rating Station Settings

Computer Name: _____

MAC Address: : : : : : _____

IP Address: . . . _____

Subnet Mask: . . . _____

Default Gateway: . . . _____

Preferred DNS Server: . . . _____

Alternate DNS Server: . . . _____

Notes: _____
