



Aspect™ Systems Installation Quick Start

Aspect Systems Installation Quick Start
© INFOTECH Soft, Inc.
1201 Brickell Avenue • Suite 220
Miami • Florida • 33131
Phone 305.371.5111 • Fax 305.371.5112
Email solutions@infotechsoft.com
Web <http://www.infotechsoft.com>

Last Updated May 4, 2010

The information of this document may change without notice.
In case of any problem with this document, please send an email to solutions@infotechsoft.com.

Aspect™, Aspect Rating Station, Aspect Control Center, Aspect Data Source, and ClinicalSync™ are trademarks of INFOTECH Soft, Inc.

Aspect Systems Hardware Setup

The Aspect System can be configured as an independent network, as part of a campus network, or as systems distributed across the Internet. In all cases, the Control Center computer **must** have a static IP in order for the Rating Stations to connect and synchronize data.

Sample Hardware for the Aspect System

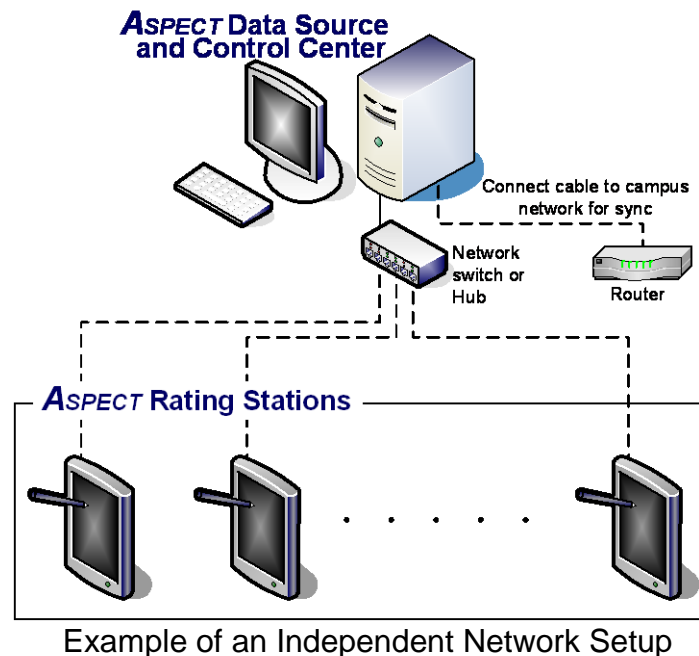
The following chart lists examples of available computers and network equipment that meet the minimum requirements of the Aspect System. For more information about the specific requirements of the Aspect Control Center and Rating Station, see the *Aspect Systems Installation Guide*.

<u>Function</u>	<u>Minimum Requirements</u>	<u>Example</u>
Control Center	512MB RAM, 30 GB hard drive, 10/100 Ethernet	Desktop: Dell Dimension 2400
Rating Station	512MB RAM, 10 GB hard drive, 10/100 Ethernet	Tablet: HP tc1100, Motion M1300 Laptop: Dell Latitude 100L Desktop: Dell Dimension 2400
Network Switch	4-Port 10 Mbps	Netgear 10/100 4-port switch, Gigaset 10/100 8-port switch, 3Com 10/100 4-port switch

Independent Network

The independent network (intranet) consists of a single Control Center computer, multiple Rating Station computers, and a network switch to connect the machines during synchronization. In order for the Control Center to synchronize with the Multisite Server, the Control Center computer would connect to the Internet – either by dial-up/DSL through an Internet Service Provider (ISP) or by reconnecting the network cable to the campus network during synchronization.

For information on connecting the Control Center computer to a campus network, please contact your campus Information Technology department.



<u>Computer Function</u>	<u>IP Address</u>	<u>Subnet Mask</u>
Aspect Control Center	192.168.0.2	255.255.255.0
Aspect Rating Station #1	192.168.0.3	255.255.255.0
Aspect Rating Station #2	192.168.0.4	255.255.255.0
Aspect Rating Station #3	192.168.0.5	255.255.255.0

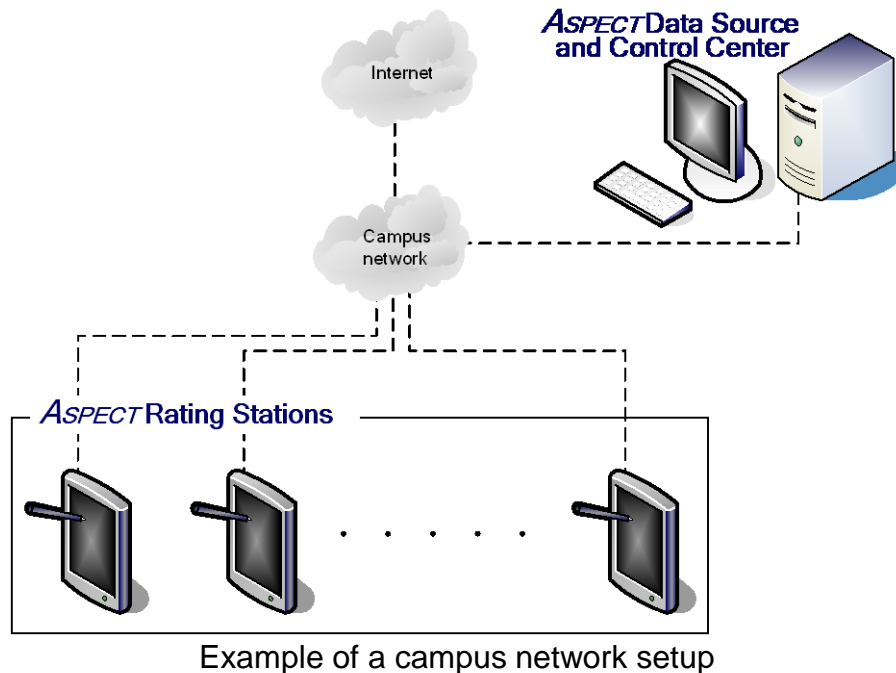
If the campus IT department assigns you a different IP address for the Control Center computer, the Rating Station IP addresses should be changed to be in the same address range.

Note: *Since the Rating Stations will not connect to the campus network, you don't need campus IT to assign additional network addresses for them.*

Campus Network

The campus network consists of a single Control Center computer, multiple Rating Station computers, and relies on the campus network to connect the machines during synchronization. The Control Center computer **must** have a static IP address for the Rating Stations to synchronize with it, the Rating Station computers may have either static or dynamic (DHCP) IP addresses. Since the Control Center is directly connected to the campus network, it can synchronize with the Multisite Server directly.

For information on connecting the Control Center computer to a campus network, please contact your campus Information Technology department.



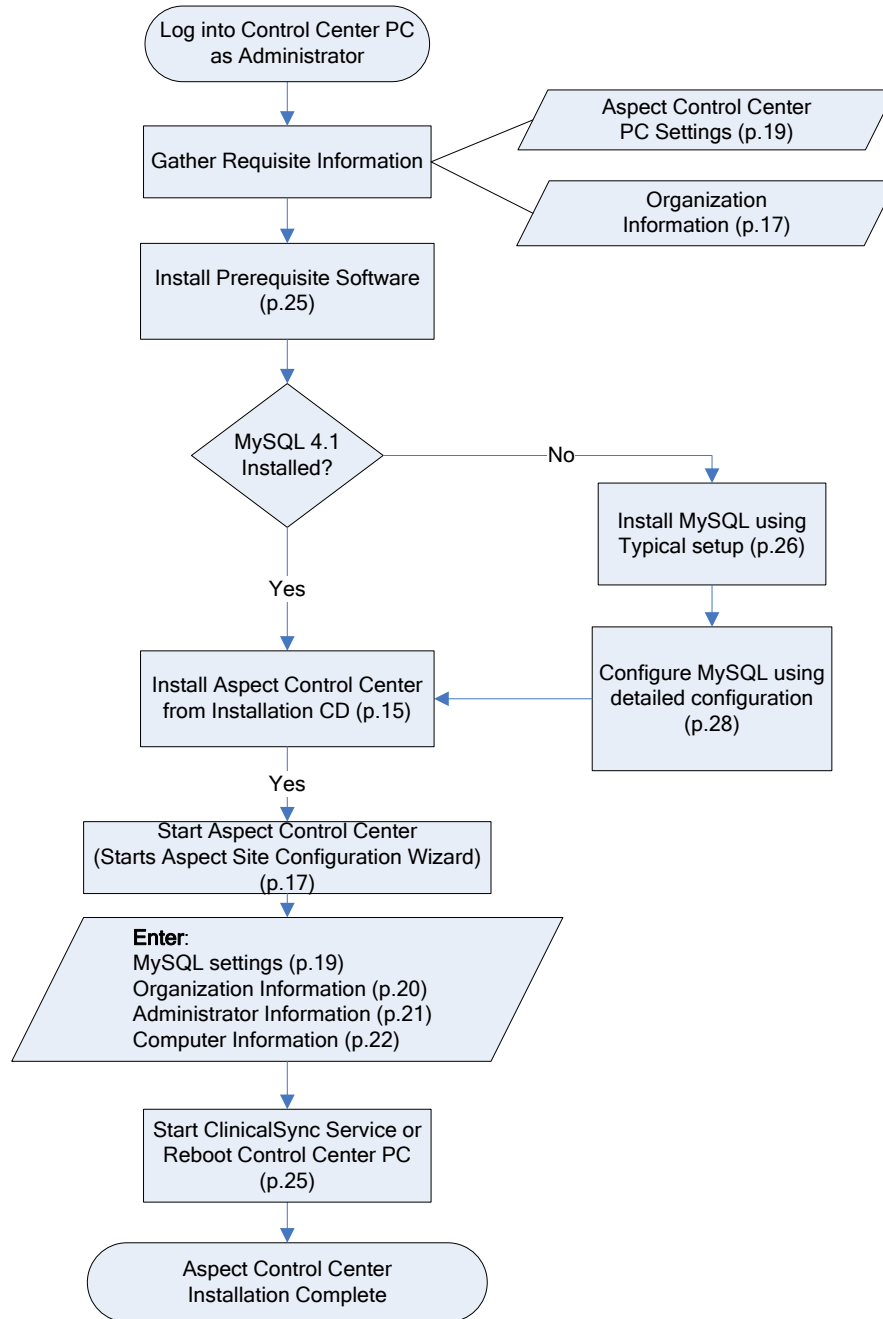
<u>Computer Function</u>	<u>IP Address</u>	<u>Subnet Mask</u>
Aspect Control Center	Assigned by Campus IT	
Aspect Rating Station #1	Static or DHCP	
Aspect Rating Station #2	Static or DHCP	
Aspect Rating Station #3	Static or DHCP	

Note: *If Rating Station computers are installed outside of the campus network, the Control Center computer must have a public IP address, that is, the computer can be connected to from the Internet.*

Note: *ClinicalSync uses ports 9300, 9301. Port 9302 is used for the Multisite Sync. Make sure these ports are not blocked by your campus network firewall.*

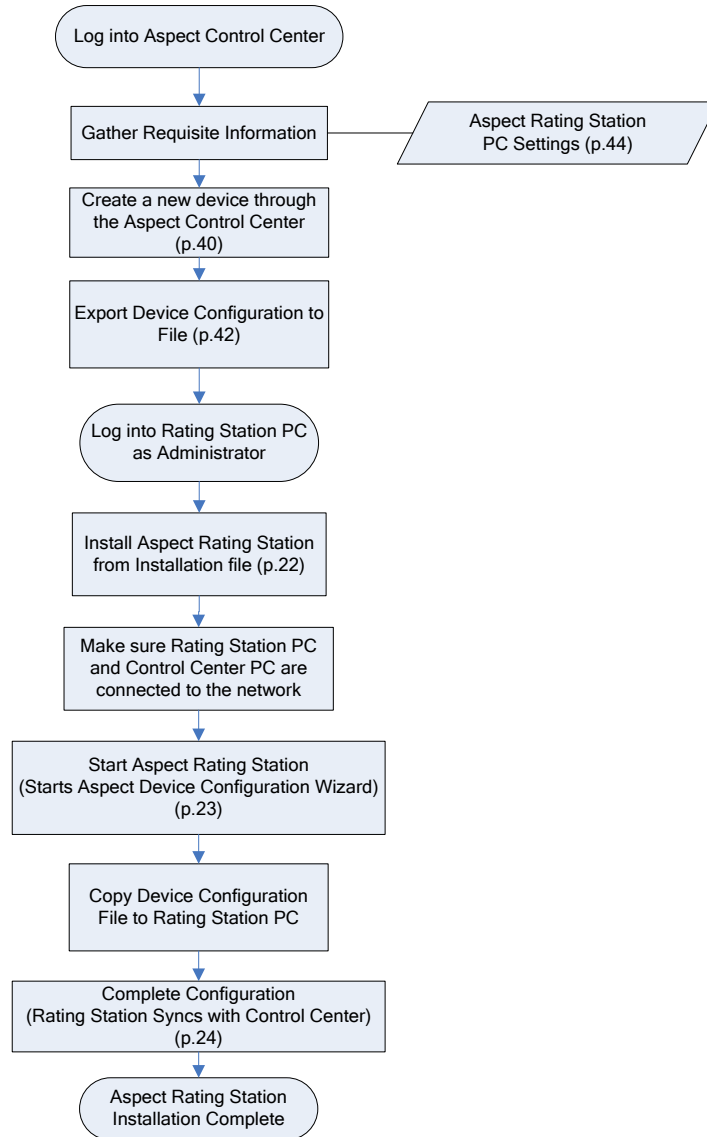
Aspect Control Center Installation

The following flow chart illustrates the installation process for the Aspect Control Center. Detailed instructions for installing the Aspect Control Center can be found in the *Aspect Systems Installation Guide*.



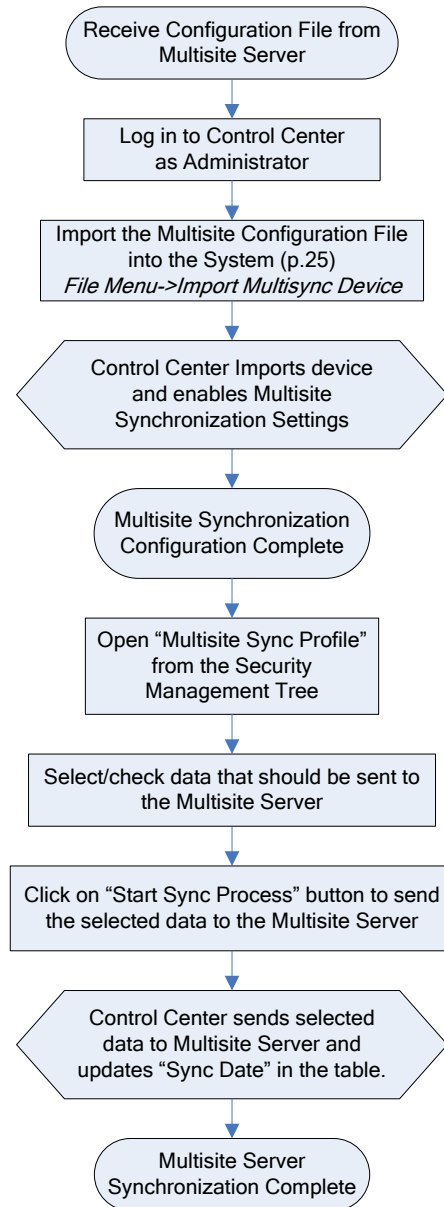
Aspect Rating Station Installation

The following flow chart illustrates the installation process for the Aspect Rating Station. Detailed instructions for installing the Aspect Rating Station can be found in the *Aspect Systems Installation Guide*.



Aspect Multisite Configuration

The following flow chart illustrates the process of configuring the multisite synchronization process within the Aspect System. More information about multisite synchronization settings can be found in the *Aspect Control Center User Guide*.



DIGS User Groups

In addition to the default user groups of Aspect System, three new groups have been created to accommodate the need of the DIGS project: Interviewer, Editor, and Reviewer. Users within the interviewer and the reviewer groups have the same permissions as indicated by the table below. The editors are granted the additional permission to modify signed Form Data. Refer the Access Control section of the *Aspect Control Center User Guide* for more information about access rights and permissions.

	R _u	R _s	R*	D _u	D _s	D*	M _u	M _s	M*	E _u	E _s	E*	I	S	Fr	To	Cr	All	
Subject																		U A C S	
SubjectData			U C				U		C					U C				U C	A S
FormDefn			U C																A S
FormDefnData			U C				U		C					U C				U C	A S
FormData																			
Sync															S	C			
User Manager																			A S
Group Manager																			A S
Device Manager																			A S

Table 1 Aspect Access Control Table

- (A) Administrator
- (U) User
- (C) Client
- (S) Server

Note: The default access control settings allow each user group to read all data and modify unsigned data. Editors have the additional permission to modify signed data. In order to control the specific data that is visible to each individual user, you must add or remove permissions from the user's account. See the Access Control section of the *Aspect Control Center User Guide* for more information.